



**ACCESSORIES
CONSUMABLE
SPARE PARTS**



Table of contents

Seat and guide machines

3

Crosswise inclined and vertical valve cylinder head

—3

Crosswise inclined and vertical valve cylinder head

—4

Mirco adjustment ixture

—5

Heavy duty fixture

—6

3.0fixture/4.0fixture

—7

Tip sharpener

—8

Vacuum testing

—9

Controlling instruments

—10

Various accessories

—11

Spare parts

—12

Spare parts

—13

Spare parts

Valve refacer TVG90/TVR100

14

accessories and consumables

—14

Pressure tester 1600/1600/1700 XL

16

Clamping system support

—16

Other accessories

—16

valve working bench TWB500/TWS1100

18

Accessories

—18

Spare parts

—19

Guide Press Machine TGP1200

—19

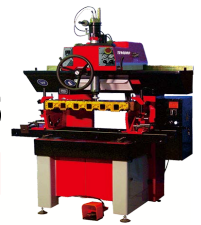
Accessories

—20

—20

General conditions of sale

21



Crosswise inclined and vertical valve cylinder head

011915 - Long universal clamp



For all kinds of cylinder head. Adapted on all long or short bars.

010426- Long clamping bar

303629 - Short universal clamp



For all kinds of cylinder head. Adapted on all long or short bars.

011425- Block for clamping bar

010416- Short clamping bar



This can be used with all types of clamping system.

013958- Tilting fixture set



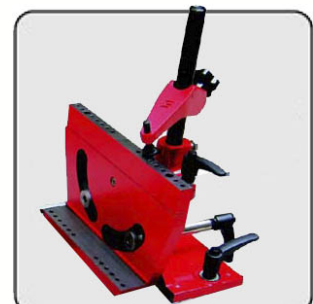
This can be used with all types of clamping system.

010432- Flat end fixture



Used with both bars on tilted clamping system.

564000 - Clamp shoe



Used to adjust the cylinder head's angle to the head position.

564001- Screw M10



Designed to clamp flat cylinder head with vertical valves.

009259- Three arm knob



Orientable clamp shoe dia. 20 mm.

014039 - U parallel with T-nut



M10 - 60 mm length for orientable clamp shoe

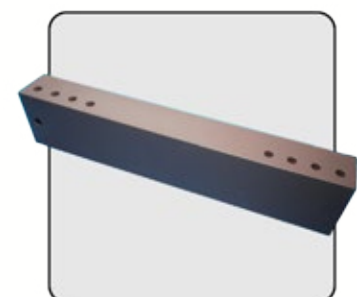
010434- Square riser bar



They can be used with all types of clamping system.



To adapt the clamping system to the cylinder head dimension.
Dimension: 40 x 70 x 300 mm



Dimension: 30 x 50 x 242 mm

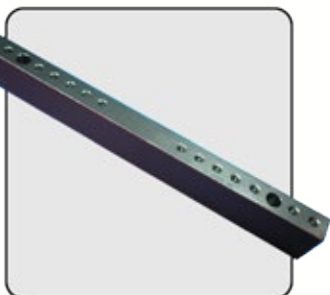


Seat and guide machines



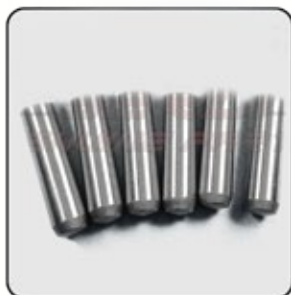
Crosswise inclined and vertical valve cylinder head

017577- Block for clamping bar



To adapt the clamping system to each cylinder head dimension:
Dimension: 20 x 38 x 300 mm

017576- Short pin set



6 pins set : used to maintain all cylinder head before using tilted clamping system.

009796- Long pin set



6 pins set : used to maintain all cylinder head before using tilted clamping system.

024298- Bubble level

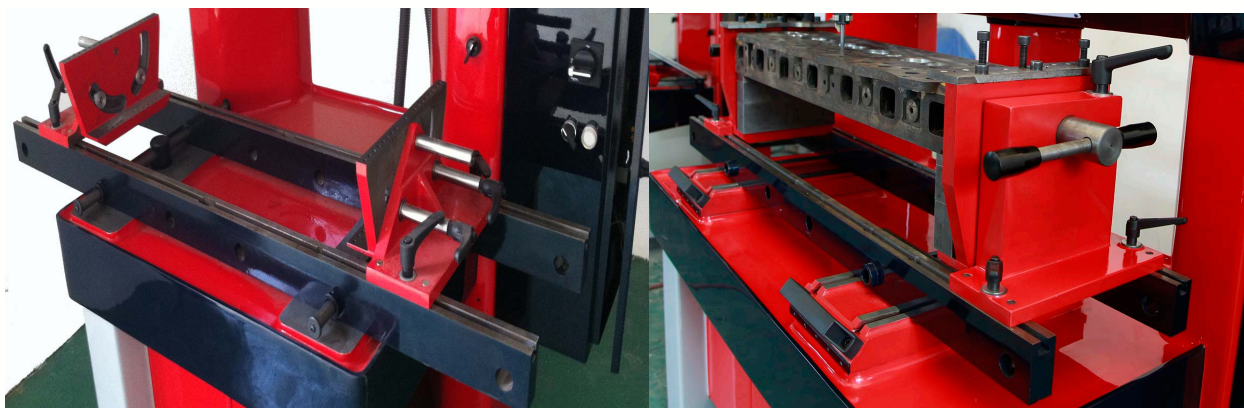


Easy to use; level your guides with accuracy

024298- T-bubble level



Easy to use; level your guides with accuracy

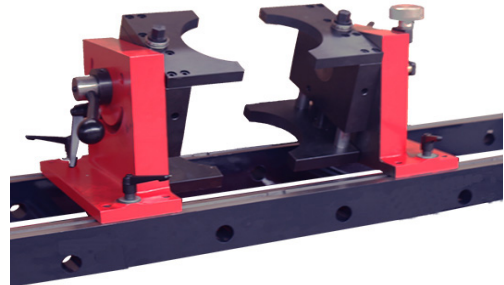


Seat and guide machines

Micro adjustment fixture



033763 - Micro adjustment fixture

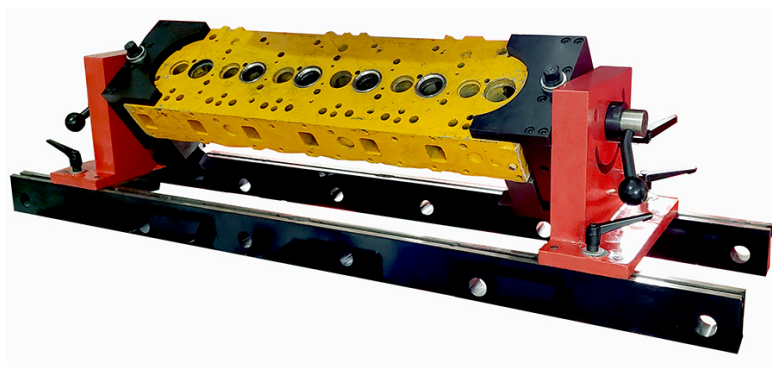
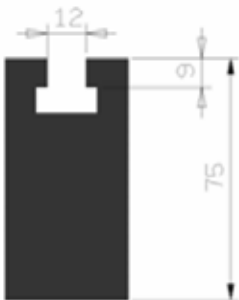


Max cylinder head dimensions:

Length: 1050 mm - 41.3"
Height: 270 mm - 10.3"
Width: 300 mm - 11.8"

- . **Allows quick positioning** of parallel and non-parallel side heads
- . **Sturdy clamping** thanks to two large jaws
- . **360° rotation** to get an easy access to all sides of the cylinder head for various jobs
- . **Firm locking of the jaw's shafts** through two handles for a perfect clamping while machining.
- . Supplied with a bubble level **024298** and a ratchet

Fits on every valve seat machines and any machines with T grooved spaced of 275 mm with the following dimensions.





Seat and guide machines

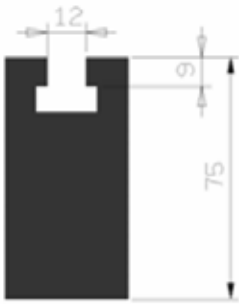
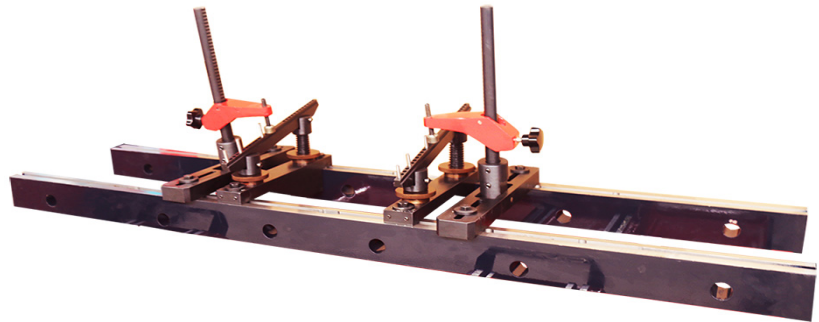
Heavy duty fixture

033622 - Heavy duty fixture

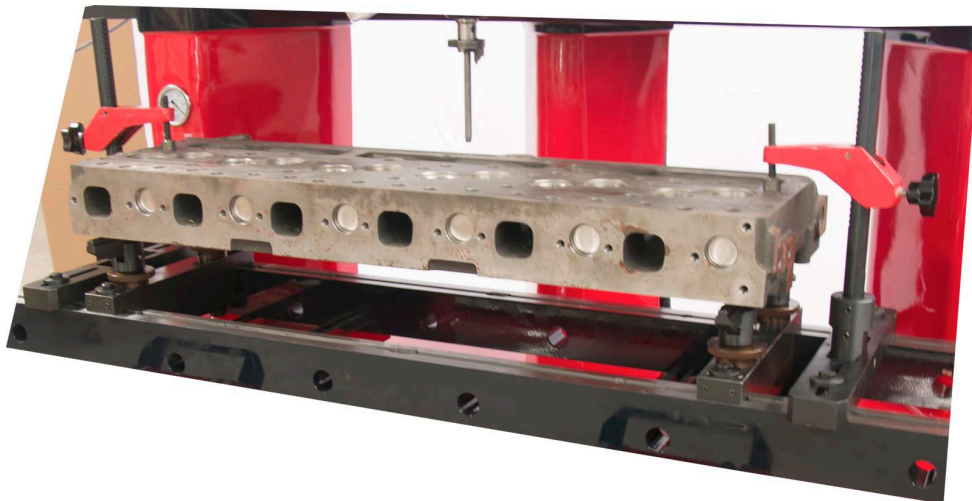
Max cylinder head dimensions:

Length: 1050 mm - 41.3"
Height: 420 mm - 16.5"
Width: 300 mm - 11.8"

Fits on every machines and any machines with T grooved spaced of 275 mm with the following dimensions.



- . **Allows quick positioning** of parallel and non-parallel side heads, **even with canted valve guides.**
 - . **Set the cylinder head** at the desired level and roll it over
 - . **Sturdy clamping** thanks to two large jaws
 - . **Sphere centering handles** to get a quick mount of the head
 - . **Firm locking of the jaw's shafts** through two handles for a perfect clamping while machining..
- Supplied with a bubble level 024298 and a ratchet**

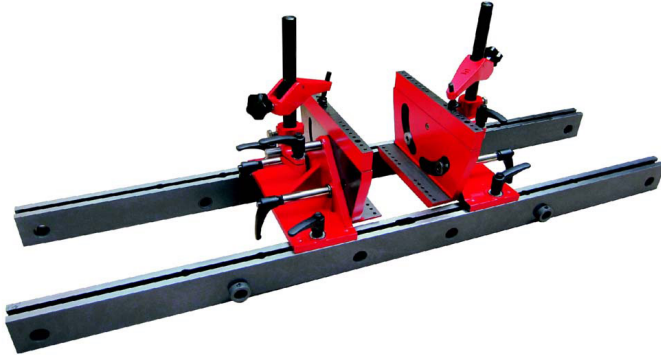




Seat and guide machines

3.0 / 4.0 fixture

033611-3.0 fixture

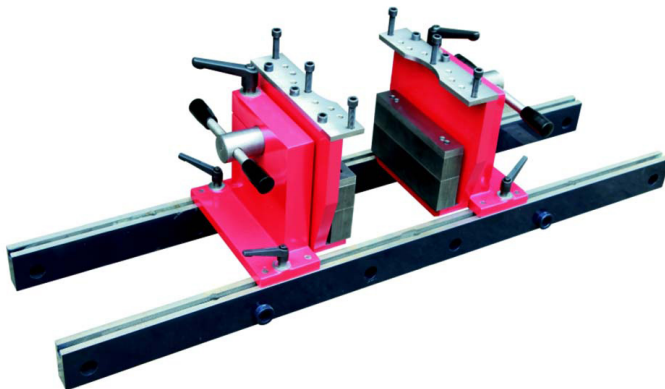


Max cylinder head dimensions:

Length: 1050 mm - 41.3"
Height: 270 mm - 10.7"
Width: 300 mm - 11.8"

- . **Allows quick positioning** of parallel and non-parallel side heads, **even with canted valve guides**.
- . **Set the cylinder head** at the desired level and roll it over
- . **Sturdy clamping** thanks to two large jaws
- . **Sphere centering handles** to get a quick mount of the head
- . **Firm locking of the jaw's shafts** through two handles for a perfect clamping while machining.
- . **Supplied with a bubble level**

033711-4.0 Fixture



Max cylinder head dimensions:

Length: 1050 mm - 41.3"
Height: 270 mm - 10.6"
Width: 300 mm - 11.8"

- . **Allows quick positioning** of parallel and non-parallel side heads .
- . **Sturdy clamping** thanks to two large jaws
- . **360° rotation** to get an easy access to the whole sides of the cylinder head for various jobs
- . **Firm locking of the jaw's shafts** through two handles for a perfect clamping while machining.
- . **Supplied with a bubble level**

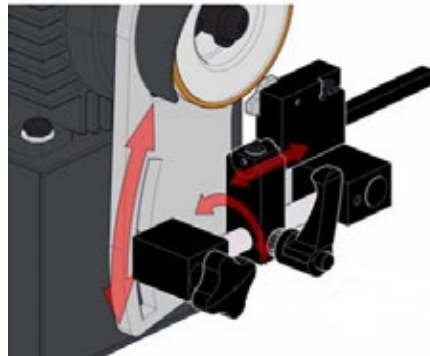
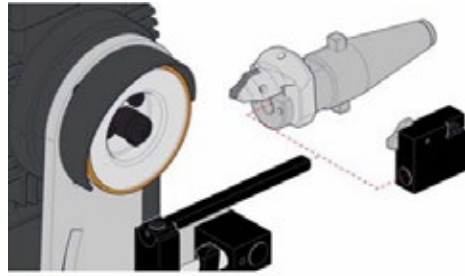
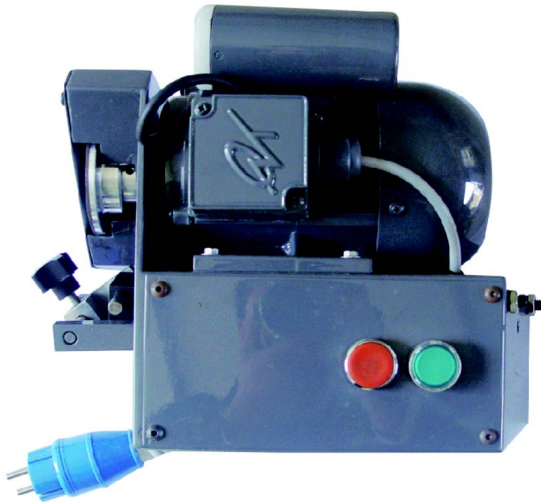


Seat and guide machines

Tip sharpener



033828 - Sharpener 3500



. **Allows you to increase** the lifespan of your carbide cutting tools in a fast and easy way.

. **Supplied** with a **Ø75 mm diamond wheel 405784**

Now sharpens original and new design bits, without removing from the tool holder*.

More tilt settings for a better surface grinding accuracy.

*not compatible with S5731 tool holder

405784 - Diamond wheel
Ø75 mm

021960- SCS Tool sharpener
Adapter Fixture

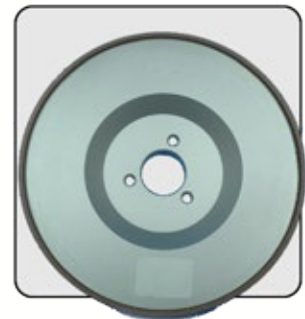
009753- Diamond wheel
Ø125 mm



Fits on any SERDI tool sharpener



**Only for tool sharpener part # :
010119**



**Only for old style Tool sharpener
Serdi 3000**





Seat and guide machines

Vacuum testing

023516 - ZJ45



The vacuum tester checks if the combination seats-valve seals. (Come with reference 304697)

304697 - Vacuum Pads

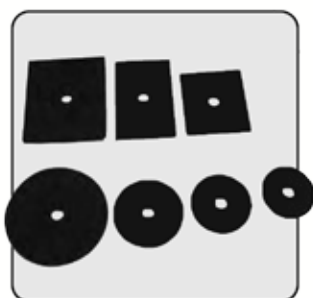


Check the seal between the valve and the seat.

Set of 7 pads including :

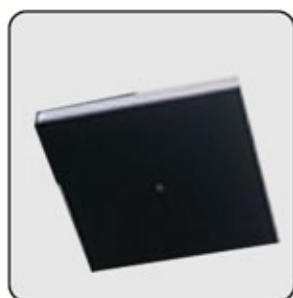
- 1 pad 87x70 mm (part# 405584)
- 1 pad 81x51 mm (part# 405585)
- 1 pad 64x56 mm (part# 405586)
- 1 pad Ø40 mm (part# 405587)
- 1 pad Ø47 mm (part# 405588)
- 1 pad Ø54 mm (part# 405589)
- 1 pad Ø80 mm (part# 405590)

303322 - Precut foam pads



You can replace the pads on your vacuum tester.

033410- Heavy duty pad



Pad 100 x 100 mm
(3.93" x 3.93")

033411- Heavy duty pad



Pad 220 x 130 mm
(8.66" x 5.1")

035804- Heavy duty pad



Pad 125 x 75 mm
(5" x 3")

700001 - Air filter



To keep the vacuum generator clean from cylinder head dust

035805- Vacuum plugs



Plugs for vacuum test.



Seat and guide machines

Controlling instruments



035075 - Digital

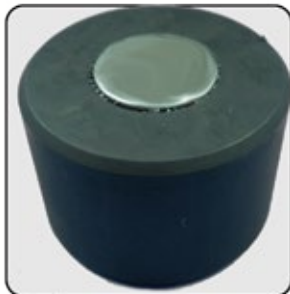


Digital display micrometer allowing to measure and adjust accurately the position of the cutter to the seat diameter, without unmounting the tool-holder from the machine. This can be used with a counterboring bit and any cutter bit.

Specifications:

Resolution pitch :0.01 mm / .0005"
Measuring unit system: Metric / Imperial
Display : Digital liquid crystal
Electric supply : 3V 2032 CRC battery
Measuring capacity: 0 – 180 mm / 0 – 7.08"
Fits on pilot from Ø 3 mm up to Ø 20 mm

405882 -Magnetic depth stop



To measure the seat housing height after machining

009663 - Bluing



Locate high spot and concentricity on the seat and seat surface.

035803- Spindle indicator



Lower spindle indicator original design.

405580 - Setting device 4200



Used to adjust the tip holder on the tool holder.

407018- Micrometer in mm



Precisely adjust the position of the cutter to the seat diameter.

006141 - Low spindle indicator



To machine the seats to the same depth position. Metric version.

583101 - Dial indicator



Inch version

405956- Micrometer in Inch



Precisely adjust the position of the cutter to the seat diameter.

035807 - Low spindle indicator



To machine the seats to the same depth position. Inch version.





Seat and guide machines

Various accessories

034048 - Toolrack



Allows stocking tool holders, tools, pilots, pads... used with the machines S3.5 and S4.5. Contact us if you need it for another machine.

014240 - Tool cart



The tool cart allows stocking tool holders, tools, pilots, pads...used with the machines.

034186 - LED Kit large size



Replacement LED kit for beam.
034186: 654x150 mm - 25.75" x 5.9" with 8 mounting screws.

034226 - LED Kit small size



500x150 mm - 19.7" x 5.9" with 6 mounting screws

010137 - Spindle nut wrench



Tightening or lossening the spindle nut with the right strength.

006424 - Valve seat run-out gauge



To machine the seats to valve seat run-out. Metric version.



Seat and guide machines

Spare parts



404029 - Diaphragm



For the workhead clamping system.

590001 - Spindle damper



225 Newton

026759 - Spindle damper



290 Newton

025428 - Pneum. air switch



Spare for the table of S60 and S100

014265 - Pneum. air switch



Spare for S1.1, S3.0, S4.0, S100 HD and S2.0

014266 - Pneum. air switch



Spare for S1.1, S3.0, S4.0, S100 HD and S2.0

007623 - Regulator



Adjust the air flow (Come with two washers Ref.013389)

010458 - Distributor



Release or clamp the air function of the machine.

008484 - Regulator/oiler



Main regulator of the machine (For 3.1, S100, S101).

603000 -Manometer



Manometer diameter 50 mm
0 - 10 Bars

603015 - Vacuumeter



Vacuometer diameter 63 mm
0 to -1 bar





Seat and guide machines

Spare parts

013129 - Spindl control panel



**Spindle control panel for
TS60, TX90, TL120, TL120XL**

012698 - Electric control panel



**Spindle control pannel for
TX90DRO, TL120DRO, TL120XLDRO**

709020 - Male socket



Male socket 4 pins MSTB

709021 - Female plug



Female plug 4 pins MSTB

701501 - Led strip



**Led Strip
Length 600 mm 10W**

703000 - Led strip



**Led Strip
Length 428 mm - 10W**

703001 - Neon



**Old S3 / S4 machine generation
quill key**

007526 - Spindle quill key



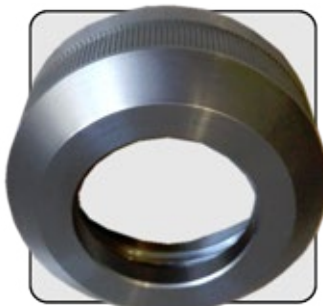
**New S3 / S4 machine generation
quill key**

404047 - Spindle quill key



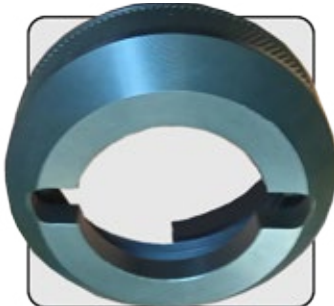
For the TS60, TX90, machines.

009766 - Raw locking ring



**For machines before 2003 (end of
machining to perform by customer)**

404062 - Locking ring



For machines after 2003

009711 - Flexible stop



**To stop the machining head on the
beam.**



Valve refacer

TVR100 accessories and consumables

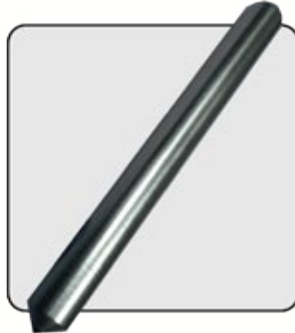


406275-Cup wheel



Fits on TVR100, TVG 90

406258 - Rear grind diamond



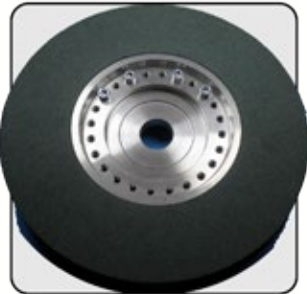
Fits on TVR100,TVG90

406257 -Front grind diamond

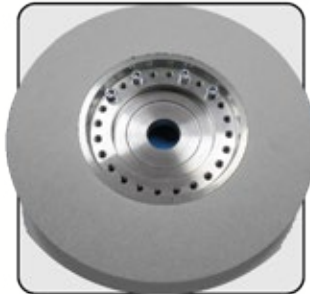


Fits on TVR100,TVG90

- Grinding wheel



**Ø200 mm standard grade
Fits on TVR100,TVG90**



**Ø200 mm hard grade
Fits on TVR100,TVG90
(only for specific needs)**

Grinding wheel



**Six -ball clamping chuck
spindle**

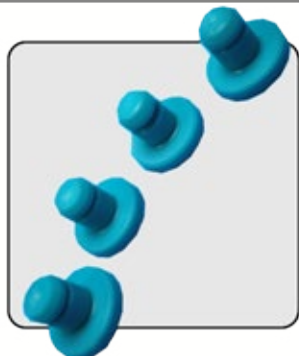




Valve refacer

TVG 90 accessories and consumables

021195- 4 pads for V-block



Fits on TVR100, TVG 90

016063 - 5 drive pads set

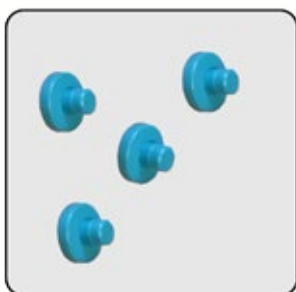


Fits on TVR100

Set of 5 pads including :

- 1 drive pad dia. 12 mm / 0.472" (part# 015513)
- 1 drive pad dia. 20 mm / 0.787" (part# 015514)
- 1 drive pad dia. 29 mm / 1.142" (part# 015515)
- 1 drive pad dia. 42 mm / 1.653" (part# 015516)
- 1 drive pad dia. 66 mm / 2.598" (part# 015517)

407626- 4 pads for V-block



Fits on S2

016734 - 3 drive pads set



Fits on TVG90

Set of 3 pads including :

- 1 drive pad dia. 20 mm / 0.787" (part# 016703)
- 1 drive pad dia. 29 mm / 1.142" (part# 016704)
- 1 drive pad dia. 42 mm / 1.653" (part# 016705)

Option:

- 1 drive pad dia. 12 mm / 0.472" (part# 016702)
- 1 drive pad dia. 66 mm / 2.598" (part# 016706)

019425- Tool cabinet



Fits on TVG90,TVR100 Machines

019426- Cooling pump



Fits on TVG90,TVR100 Machines



Pressure tester 1600/1600L/1700XL

Clamping system support

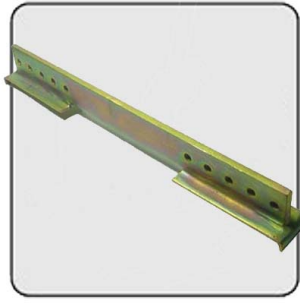


010059 - Clamping system



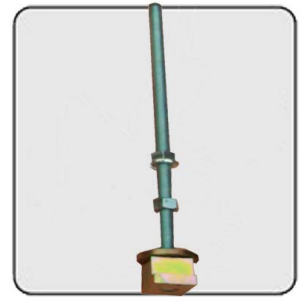
Set of 2 clamping system for crosswise inclined cylinder head. Used to put in horizontal position a crosswise inclined cylinder head.

012439 - Clamping system



Used to clamp a flat cylinder head.

010779 - Long clamping block



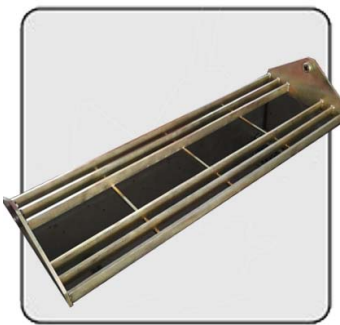
To mount on the rotating crib (400 mm screw)

010795 - Short clamping block



To mount on the rotating crib (350 mm screw)

010033 - Turnover frame



To clamp blocks 1370*425*210mm

013569 - Clamping bar



Universal clamping bar with washers.

Pressure tester 1600/1600L/1700XL

Other accessories



010056 - Rubber pads set:



Rubber pads set :

- 25 pads Ø30 mm (part# : 010050)
- 15 pads Ø40 mm (part# : 010051)
- 10 pads Ø60 mm (part# : 010052)
- 20 pads 60x30 mm (part# : 010053)
- 10 pads 80x40mm (part# : 010054)
- 10 pads 100x50mm (part# : 010055)
- 1 seal 200 x290mm (part# : 010360)

010360 - Neoprene Seal



200x290 mm

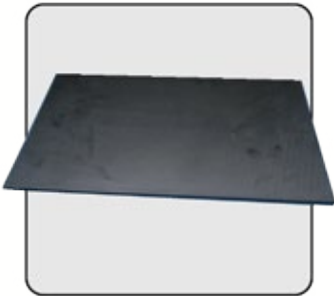




Pressure tester 1600/1600L/1700XL

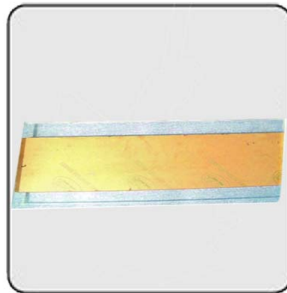
Other accessories

011858 - Neoprene plate



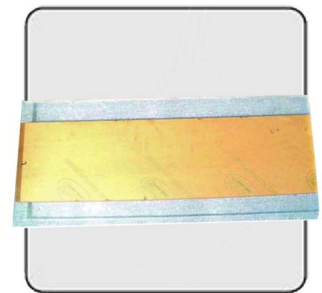
1400x715x4 mm

010860 - Plexiglas plate



To compress pads on the cylinder head.
220x800x30 mm
We realise any kind of plate on request.

010861 - Plexiglas plate



To compress pads on the cylinder head.
330x800x30 mm
We realise any kind of plate on request.

018798 - Flexible hose



Flexible link between the cylinder head and the pressure tester.

010801 - Female union



Female straight union G1/8 for SPT
Adapts on the flexible hose

010802 - Male union



Male straight union M5 for SPT.
Adapts on the head to link it to the SPT through the flexible hose

014474 - Lubricant



5 liters can of coolant concentrate

031667 - Lubricant



20 liters can of coolant concentrate

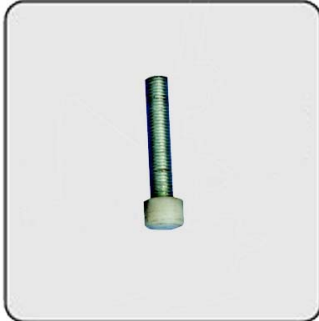




valve working bench TWB500/TWS1100

Accessories Spare parts

081858 - Tip



2CMØ6mm , 2CMØ8mm ,
3CMØ10mm, 4CMØ10mm
5CMØ8mm , 7CMØ10mm

081860 - Plier



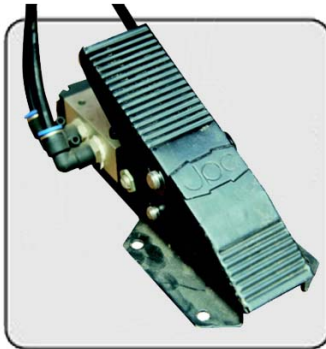
To install cylinder block valve
spring, length 31 cm

081861 - Pressing plate



To compress pads on the cylinder
head.

081798 - Foot padele



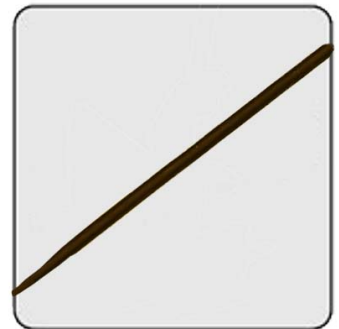
Flexible link between the cylinder
head and the pressure tester.

081800 -Indenter



Flexible link between the cylinder
head and the pressure tester.

081801 - Magnetism stick



To install cylinder block valve
spring, length 31 cm





Guide Press Machine TGP1200

Accessories

077858 - Guide disassemble bar



To disassemble Ø5 to Ø15 guides
(inside diameter)

077860 - Guide assemble bar



To assemble Ø5 to Ø15 guides
(inside diameter)

077861 - Adapter



To adapte Ø14 guides

077798 - Press head



To support different structure of
the cylinder head. 5 bars

077799 - Support sleeve



12 mounting heads, To seat ring
diameter Ø11.5-26mm



General conditions of sale

All prices are quoted in USD and are enduser's net prices.
All prices are to be understood : EX-WORKS (EXW incoterms 2010) ANNECY
For any other incoterms, we shall submit our best quotation upon request.

PAYMENT TERMS :

If no specific payment terms have been agreed upon, payment is to be understood as «irrevocable letter of credit»

Our Bank name and address are as follows :

XI'AN TENDTOOL MACHINERY CO.,LTD
ADD:25# NO.181,INDUSTRIAL BUILDING BLOCK A,TAI BAI NAN ROAD ,XI AN, CHINA

BANK INFORMATION (ADVISING BANK):

BANK: CHINA CITIC BANK XI'AN BRANCH
ADD: CITIC MANSION, NO. 89 NORTH CHANG'AN ROAD, XI'AN, CHINA
USD ACCOUNT NO.: 7251311482100000723
SWIFT: CIBKCNBJ710

INSPECTION :

If independent inspection should be required (SGS, BUREAU VERITAS, CALEB BRETT or similar) it will be charged to the importer's.

GUARANTEE :

TENDTOOL guarantees all parts of its equipment, to the original purchaser, for one full year from date of shipment (except as provided below) against defects in material or workmanship, when the equipment is installed in strict accordance with its particular specifications. TENDTOOL MACHINERY will repair and/or replace free of charge (Ex works) all such defective parts, ONLY when returned to the factory in XI'AN CHINA, with shipping charges PREPAID. This guarantee DOES NOT COVER damage caused by accident, abuse or faulty installation nor repair or replacement of parts worn or consumed in normal operation of the machine. Additionally, this guarantee does not cover such items as Diamond Tools, Ball Bearings, Grinding Wheels, Belts, Carbide Tool Bits and other accessory items, except at the discretion of MACHINES SERDI. This guarantee is at no time construed to mean the entire machine.

CANCELLATION OF ORDER :

Cancellation of order must be in writing and returned to the factory before shipment.

SHORTAGE OR LOST GOODS :

Any claims for shortages or loss must be reported within 10 days from receipt of shipment. Claims for transit loss or damage are the responsibility of the carrier according to the incoterm required by the importer.

RETURN MERCHANDISE POLICY :

- Merchandise may not be returned to XI'AN TENDTOOL MACHINERY CO.,LTD(TENDTOOL) without written or verbal approval.
- Customer MUST contact the Export Departement to receive authorization.
- Merchandise authorized for return must be returned at customer's charge along with a copy of the invoice(s) or delivery note.
- Returning the goods DOES NOT guarantee credit.
- Credit for return merchandise is at the sole discretion of MACHINES SERDI.
- Credit if any will be issued ONLY after inspection of returned goods.

PRICES AND TERMS ARE SUBJECT TO CHANGE WITHOUT NOTICE

Valve seat and guide machines



XI'AN Tendtool Machinery Manufacturing Co.,LTD.

Tel: +86 29 88396071 / 13909244118

Fax: +86 29 88396333 /

E-MAIL: info@tendtool.com

export@tendtool.com

Add: A1101 Palmary Plaza, No. 4 Fenghuinan Road, Xi'an, China